




# *The Marsh View*

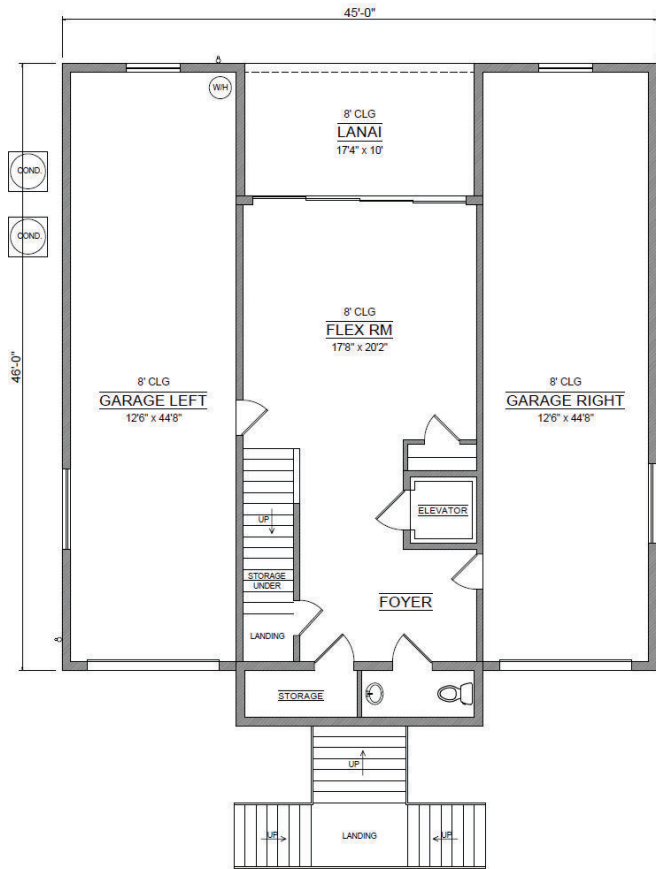
The Marsh View is the epitome of luxury coastal living. The symmetrical exterior boasts a low country flare with two deep garages and a split stair case leading to the front doors. The first floor includes a large flex space and an elevator that ascends to all three floors. This almost 5,700 square foot home has an open concept floorplan with the kitchen, dining, and great room sharing one large area. Directly off the kitchen is an enormous hidden pantry with great space for a custom scullery. The secluded and expansive master suite is located on the third floor where you will also find oversized his and her closets, a laundry room, and a study. The master suite has potential for beautiful views out the rear of the home.

  
**SALTWATER HOMES**  
*Custom Home Builder*

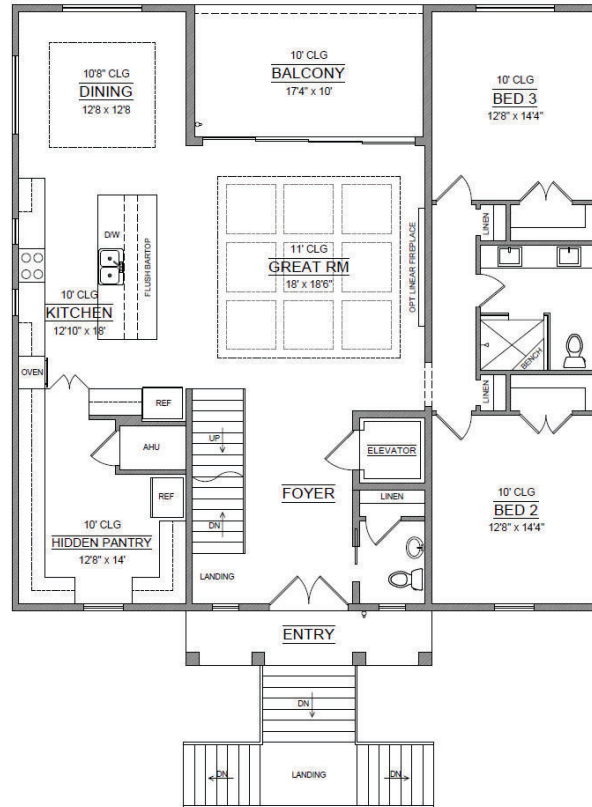
800.678.3618 ~ 386.447.4400  
[www.mysaltwaterhome.com](http://www.mysaltwaterhome.com) 

GC-0041345

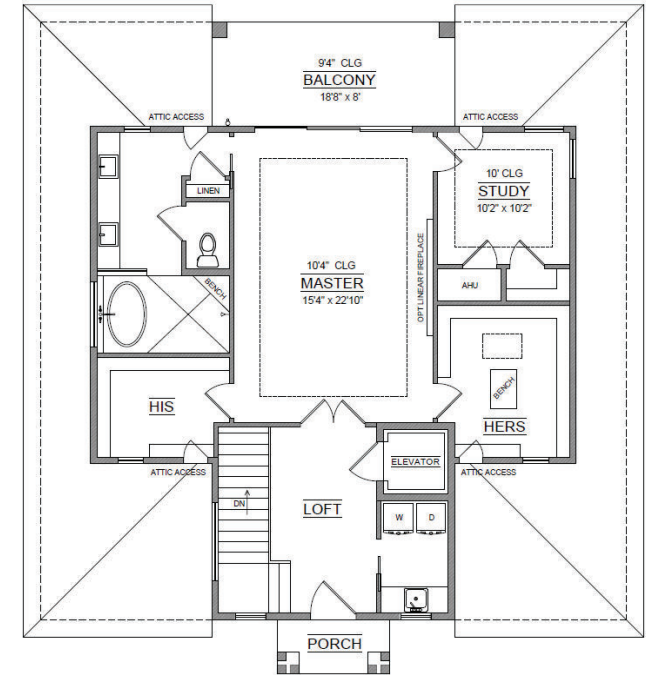
## 1st FLOOR



## 2nd FLOOR



## 3rd FLOOR



Living 1st.....750  
 Living 2nd.....1,897  
 Living 3rd.....1,194  
**Living Total.....3,841**

1st Lanai.....173  
 1st Garage Left.....613  
 1st Garage Right.....613  
 2nd Balcony.....173  
 2nd Entry.....78  
 3rd Balcony.....149  
 3rd Porch.....36  
**Total.....5,676**

# The Marsh View

3 Bedrooms, 2 Full Baths, 2 Powder Baths, 4 Car Garage