



# *The Tivoli*

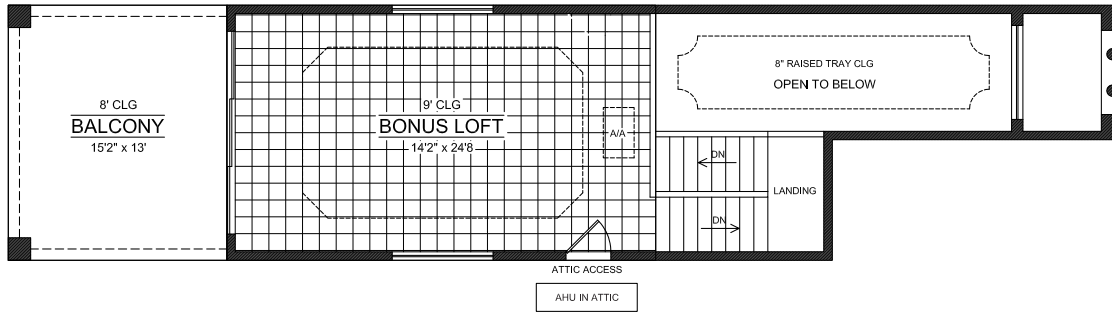
Greeted by the colossal entry, the Tivoli showcases the most popular features one will find. This 3 bedrooms, 2.5 bath home provides expansive rear views from practically every room. Only to be highlighted by the 2nd story bonus room and balcony designed to overlook any view, whether it be a golf course or the ocean. On the 1st floor, one will find a centrally located chef's dream; the gourmet kitchen. With plenty of cabinet space, quartz countertops, and a hidden pantry, this kitchen is the "Heart of the Home".

  
**SALTWATER HOMES**  
*Custom Home Builder*

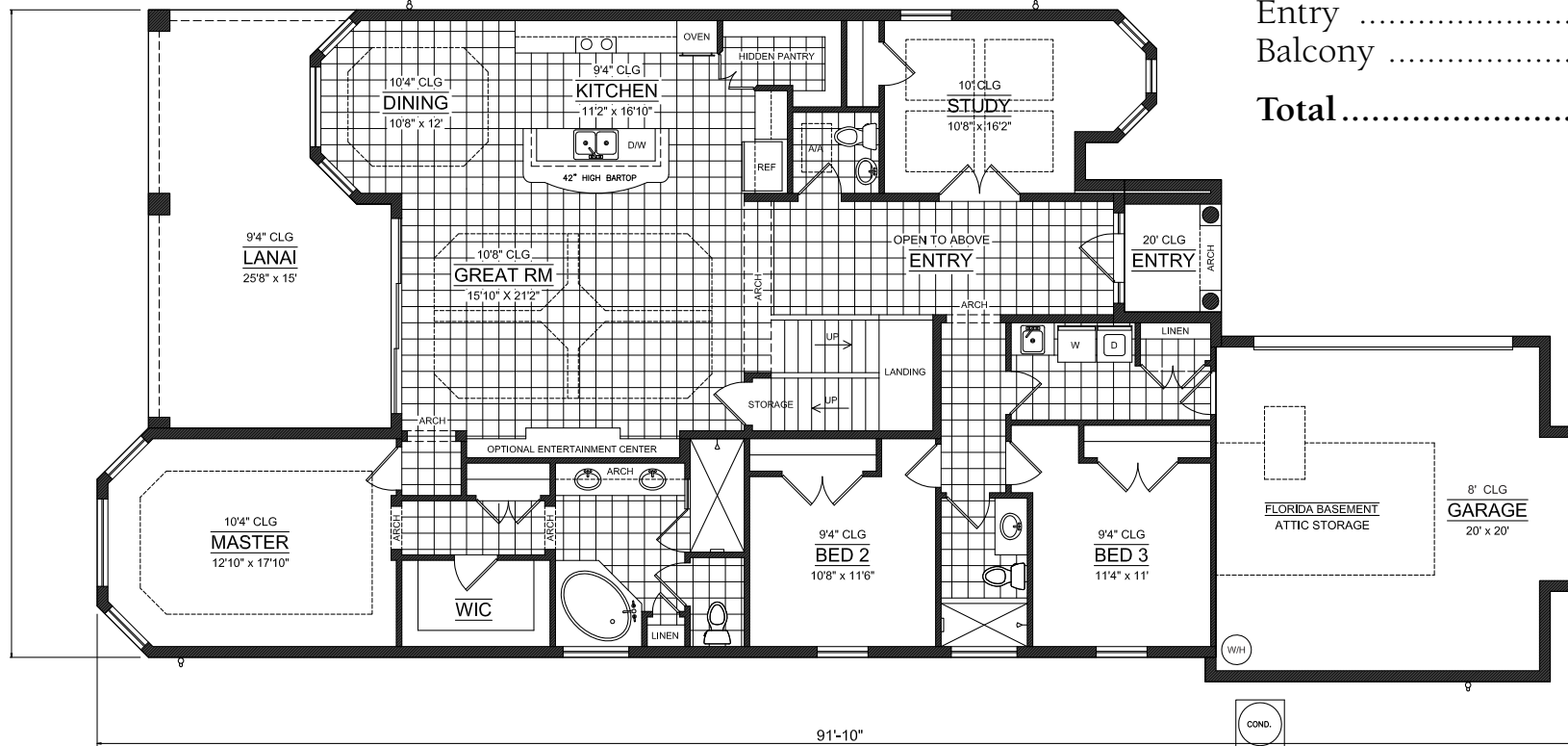
800.678.3618 ~ 386.447.4400  
[www.mysaltwaterhome.com](http://www.mysaltwaterhome.com)



GC-0041345



Living Area 1st..... 2,239 sf.  
 Living Area 2nd ..... 387sf.  
**Living Total.....2,626 s.f.**  
 Lanai.....335 sf.  
 Garage .....462 sf.  
 Entry .....49 sf.  
 Balcony .....197 sf.  
**Total.....3,669 sf.**



# The Tivoli

3 Bedroom, 3 Bath, 2 Car Garage

Saltwater Homes, Inc reserves the right to modify floor plans, exterior elevations, specifications, features, prices and product types without prior notice or obligation. All plans, elevation renderings, and artist's conceptions are not necessarily to scale. All square footages are approximate. Copyright © 2013