



The Pacifica

This outstanding two-story home features lanais, porches, and balconies for unobstructed views from all areas of your personal paradise. The Pacifica sets itself apart with the main living space on the second floor and an oversized family room and guest suites on the first floor. This well designed floor plan includes an open concept floorplan, galley style kitchen, and an open corner sliding glass door in the living and dining area. This home is perfect for entertaining. The Pacifica; a home; a lifestyle.


SALTWATER HOMES

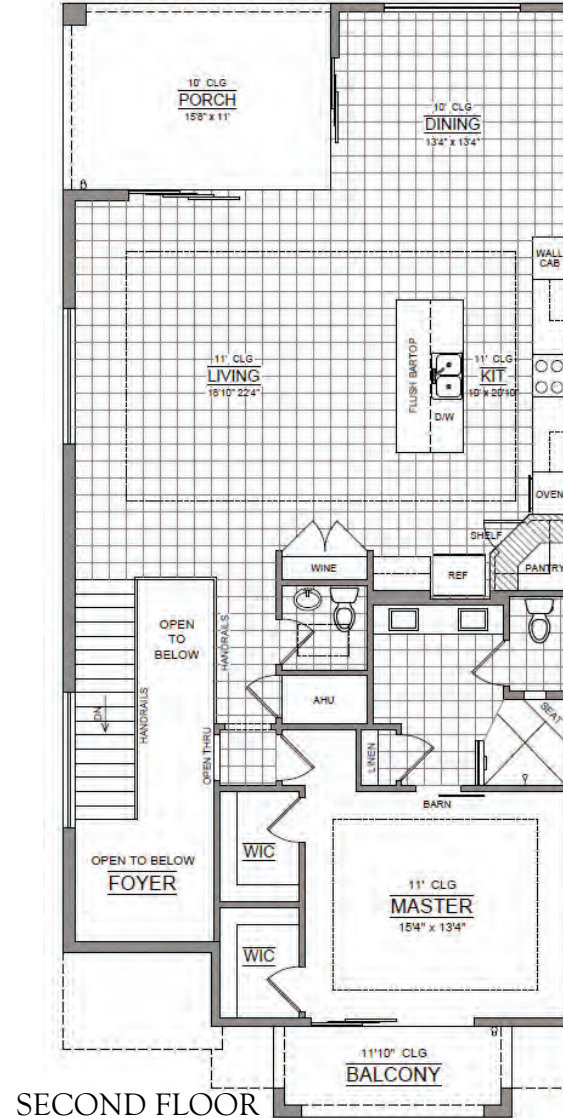
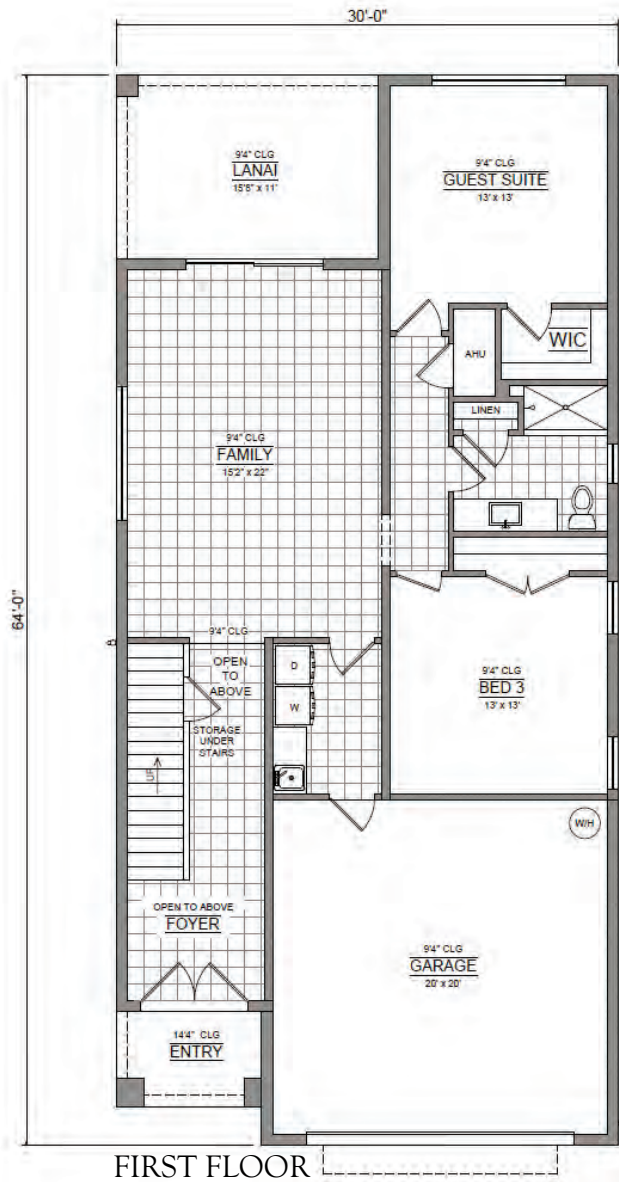
Custom Home Builder

800.678.3618 ~ 386.447.4400

www.mysaltwaterhome.com



GC-0041345



Living Area 1st.....	1,253 sf.
Living Area 2nd.....	1,310 sf.
Total Living.....	2,563 sf.
Lanai.....	165 sf.
Garage.....	432 sf.
Entry.....	49 sf.
Balcony.....	330 sf.
Porch.....	75 sf.
Total.....	3,614 sf.

The Pacifica

3 Bedroom, 2.5 Bath, 2 Car Garage

Saltwater Homes, Inc reserves the right to modify floor plans, exterior elevations, specifications, features, prices and product types without prior notice or obligation. All plans, elevation renderings, and artist's conceptions are not necessarily to scale. All square footages are approximate. Copyright © 2019