




The Marsh View

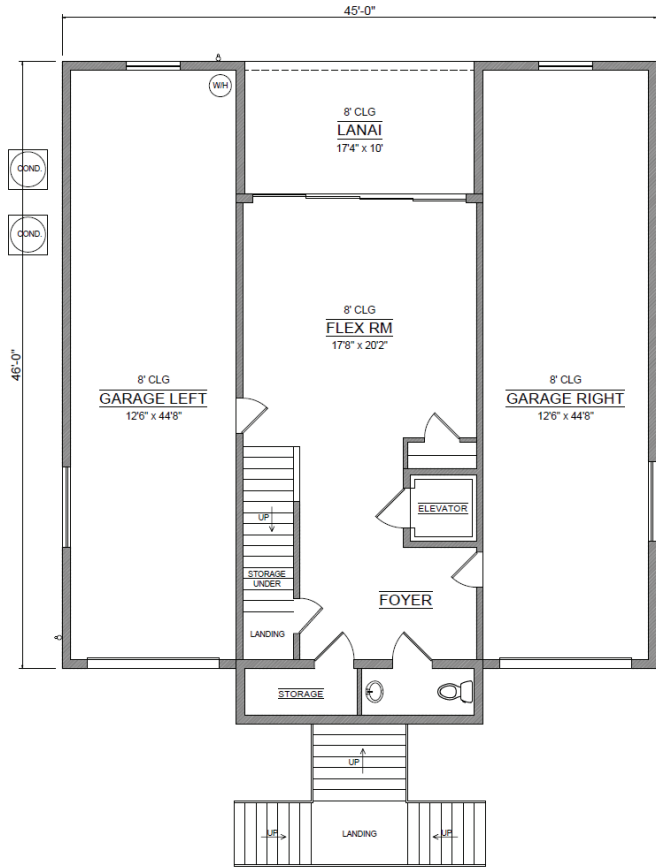
The Marsh View is the epitome of luxury coastal living. The symmetrical exterior boasts a low country flare with two deep garages and a split stair case leading to the front doors. The first floor includes a large flex space and an elevator that ascends to all three floors. This almost 5,700 square foot home has an open concept floorplan with the kitchen, dining, and great room sharing one large area. Directly off the kitchen is an enormous hidden pantry with great space for a custom scullery. The secluded and expansive master suite is located on the third floor where you will also find oversized his and her closets, a laundry room, and a study. The master suite has potential for beautiful views out the rear of the home.


SALTWATER HOMES
Custom Home Builder

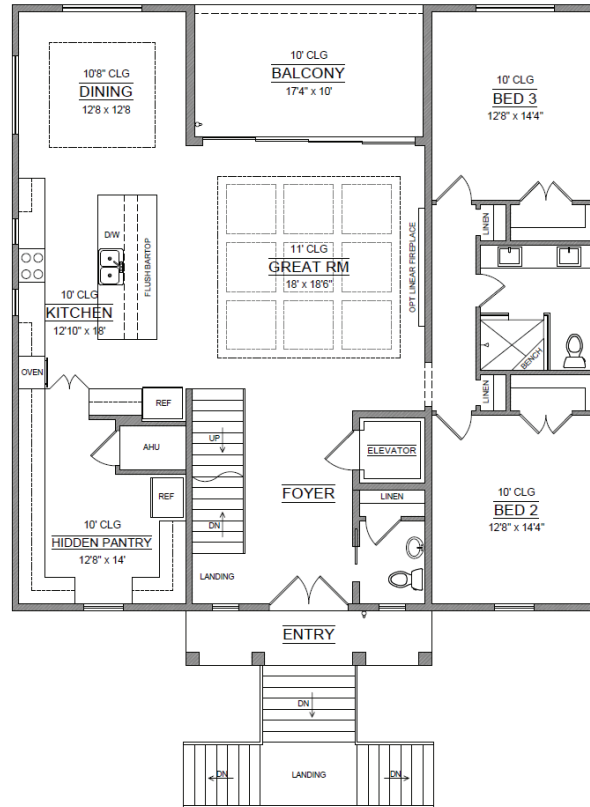
800.678.3618 ~ 386.447.4400
www.mysaltwaterhome.com 

GC-0041345

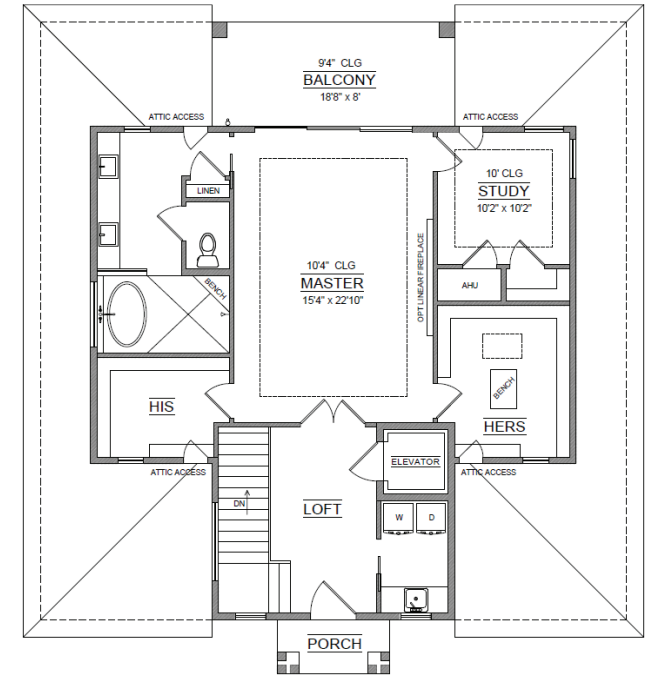
1st FLOOR



2nd FLOOR



3rd FLOOR



Living 1st.....	750	1st Lanai.....	173
Living 2nd.....	1,897	1st Garage Left.....	613
Living 3rd.....	1,194	1st Garage Right.....	613
Living Total.....	3,841	2nd Balcony.....	173
		2nd Entry.....	78
		3rd Balcony.....	149
		3rd Porch.....	36
		Total.....	5,676

The Marsh View

3 Bedrooms, 2 Full Baths, 2 Powder Baths, 4 Car Garage